



How to Install Artificial Grass

How To Replace Your Existing Lawn with Artificial Grass

Before you start, do you have the right tools:

- Sod cutter or flat head spade
- Shovel
- Hammer
- Level or straight edge – 48” or more
- Leveling rake
- Wheelbarrow
- Edger or Bender Board – for use around bedding areas
- Vibrating compactor and hand tamper
- 6” Spiral Galvanized nails – 1 nail placed every 10” around perimeter of lawn and 8” offset on seams
- Seam Tape and adhesive – if needed
- Power Broom or stiff hand broom – for brushing up the turf after installation
- Artificial Turf

Tip: Roll out your artificial grass in the sun prior to installation. Heat helps raise the turf blades.

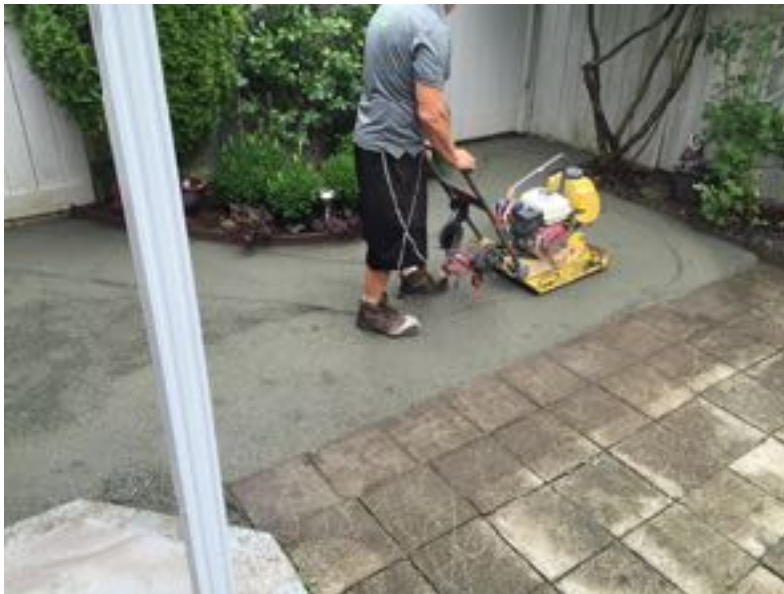
Step 1: You can rent a Sod Cutter to remove your lawn or use a shovel to excavate your soil to a depth of 4 to 6 inches from the height of the sidewalk, driveway or any area you want your new lawn to be level with. This would be the time to build up the area if it is sitting low.

Step 2: Where there is not an edge to butt the grass up to, use some treated wooden ties securing them with 2’ rebar 1/2” diameter is recommended. You can also install PVC edger. Alternatively create a concrete block edge to establish a frame around the area to be covered with artificial grass. This will create a boundary around the perimeter so the base prep remains stable.

Step 3: Back fill your excavated area using a rock sand base like construction sand, sechelt sand or road base. Your base must allow drainage and be able to become a hard core surface. Use the following [calculation guide](#) to determine how much base material you will need.

Step 4: When filling in your base material add 2 inches then compact it using a heavy roller or compactor plate. A hand tamper can be used in hard-to-get areas like corners. The area needs to be porous, but firm. We recommend renting a vibrating tamper machine to ensure the area is firmly compacted. Top off the remaining fill and repeat the

compacting process. For best results mist the first 2 inches with water while compacting. Repeat the misting process throughout.



Tip – To level the area use a wooden 2" x 4" by 6 feet, sliding the bar left and right pulling towards you across the surface. You can also use a wide levelling rake, which can be rented.



Step 5: If you have pets, it is recommended that you use a pet deoderizer, Pure Zeo, which helps breakdown pet urine, reducing smells, keeping your artificial grass smelling fresh. You can double up your protection by adding a skim coat onto the base. Add Pure Zeo on the surface of the artificial grass as well. Brush in Pure Zeo evenly thought the surface of the turf with a stiff broom. Water in your Pure Zeo to facilitate the pellets down to the base of the turf. The surface addition of Pure Zeo is the final step after installation.

Step 6: Unroll your fresh, new artificial lawn over the base prep. Always make sure you check the pile direction of your artificial lawn. It is recommend that you lay the turf, so when finished you are walking into the pile. Start to anchor the turf from one corner outward. NOTE: seaming instructions below.

Step 7: Anchor your artificial lawn to the ground around the edges with 6 inch galvanized spiral nails. These should be nailed in approximately every 10 to 12 inches or about a hammer length apart. When putting in the nails, separate the grass blades so you are nailing directly onto the backing and not catching any blades. Don't over-hammer the nail as this will cause indents. The thickness of the pile will hide the head of the nails.



Step 8: Spread **pet deodorizer infill** on top of your turf area (if you have pets) and brush it in then water it down.

Step 9: Your final **step** is to brush up your new turf with a stiff broom.

Brush **against** the pile. **For** best results, rent a power broom. Over time you will notice your turf will stand up straight especially once the warm temperature occurs.

Maintenance of your artificial lawn [PDF](#) for printing

Installation of your artificial lawn PDF for printing

Installation of an artificial lawn on a deck or balcony PDF for printing

How to Join Your Artificial Grass Using Fibre Seam Tape and Heavy Duty Construction Adhesive – Ground only

Tip: Seam tape isn't always necessary to join 2 pieces of grass together.

Step 1: The most important thing to ensure when joining two or more pieces of artificial grass, is that the pile runs in the same direction.

Step 2: Cut one of the connecting pieces against the stitch line (ribbed line on under side of turf). The other connecting side should also be cut along the stitch line but still have the lip.

Step 3: Line the two pieces together so there is 3/8" gap between the stitch lines.

TIP: At this point you may notice that seam tape is not necessary and nailing only will work.

If seam tape is necessary, anchor them by putting temporary nails about 12 inches away from the seam-line. Now fold away both pieces far enough to allow you to lay the seam tape on the ground, directly up the centre of the join.



Step 4: Also anchor the seam tape with nails so it doesn't move.

Step 5: Apply a thick coating of Heavy Duty Construction Adhesive along the seam tape in a zig zag line. Using a spreader, spread the adhesive onto the seam tape evenly.



Step 6: Fold down side of the Artificial Grass onto half of the glued seam tape, then repeat this process on the other side. Always ensure that your two Artificial Grass pieces butt up together all the way up the joining seam.

Step 7: Firmly press along the length of the seam to ensure the adhesive sticks. Anchor the glued seam with 6” galvanized nails, on each side in an offset pattern.

Step 8: Once you’re happy with the results, brush the pile with a stiff broom or power broom. FG Lawns has power broom service for only \$189.00.

Remember, seaming takes time and skill to do it right. The ultimate goal is make the whole area look like one piece of grass.

The warmer and sunnier the weather the quicker your grass will settle and creases will become less and less obvious – this process will take time. Once settled carefully cut the boundary with a sharp trimming knife.

Creases – Due to the molecular structure of the material artificial grass does sometimes crease when rolled. Creases will fall out. The grass is not classed as faulty if delivered or installed with creases. The grass will de-crease quite noticeably on a daily basis, especially in warmer weather conditions. If you are installing in cooler temperatures it may take longer for the crease to dissipate – until warmer temperatures occur.

How to Install on Decks, Patios and Balconies

Step 1: Your Artificial Grass can easily be installed onto any existing concrete or hard smooth surface, as long as it drains well including previously decked areas. If your area is exposed to the weather it is recommended that you also install drain matting under your turf. Drain mat channels the water out and allows air flow under your turf, allowing your turf to dry faster.

Step 2: Remove and clear off any debris from the area you wish to cover.

Step 3: Lay your Artificial Grass onto the area. If you are using drain mat, put the drain mat down first. Do not put the drain mat right up to the edges as you need about 2 to 3 inches to apply adhesive to your artificial grass.

Step 4: Stretch out your Artificial Lawn to remove any ripples, either directly over the concrete or on top of the drain mat. TIP: if you patio is not level, an easy way to raise the area, is to place roofing shingles in the low spots and put your drain mat or turf over them.

Step 5: To affix your turf, go around the perimeter using the Heavy Duty Construction Adhesive or indoor outdoor double sided tape. The area should be dry before applying any adhesive or tape.

Step 6: If you need to seam, you can use seam tape with construction adhesive or indoor/outdoor double sided carpet tape.

Step 7: The most important thing to ensure when joining two or more pieces of artificial grass, is that the pile runs in the same direction.

Step 8: Cut one of the connecting pieces against the stitch line (ribbed line on under side of turf). The other connecting side should also be cut along the stitch line but still have the lip.

Step 9: Line the two pieces together so there is 3/8" gap between the stitch lines.

Step 10: Now fold away both pieces far enough to allow you to lay the seam tape on the deck, directly up the centre of the join and lay down the seam tape.

Step 11: Apply a thick coating of Heavy Duty Construction Adhesive along the seam tape in a zig zag line. Using a spreader, spread the adhesive onto the seam tape evenly.

Step 12: Fold down side of the Artificial Grass onto half of the glued seam tape, then repeat this process on the other side. Always ensure that your two Artificial Grass pieces butt up together all the way up the joining seam.

Step 11: Once you're happy with the results, brush pile with a stiff broom, plastic fan rake or vacuum.

NOTE: Seaming instructions are above if needed.

Contact us if you have any questions.

FG Lawns
604-430-5396
info@fg-lawns.com